

Accelerated Certification of Additively Manufactured Metals: acamm.llnl.gov

Achieving “Just Press Print” for Metal Additive Manufacturing

NSF-sponsored Blue Sky Competition NAMRC/MSEC
June 6, 2017

Wayne E. King, Andrew Anderson, Jean-Luc Fattebert,
Robert Ferencz, Neil Hodge, Saad Khairallah,
Manyalibo Matthews, Alexander Rubenchik,
Otis Walton, and Morris Wang



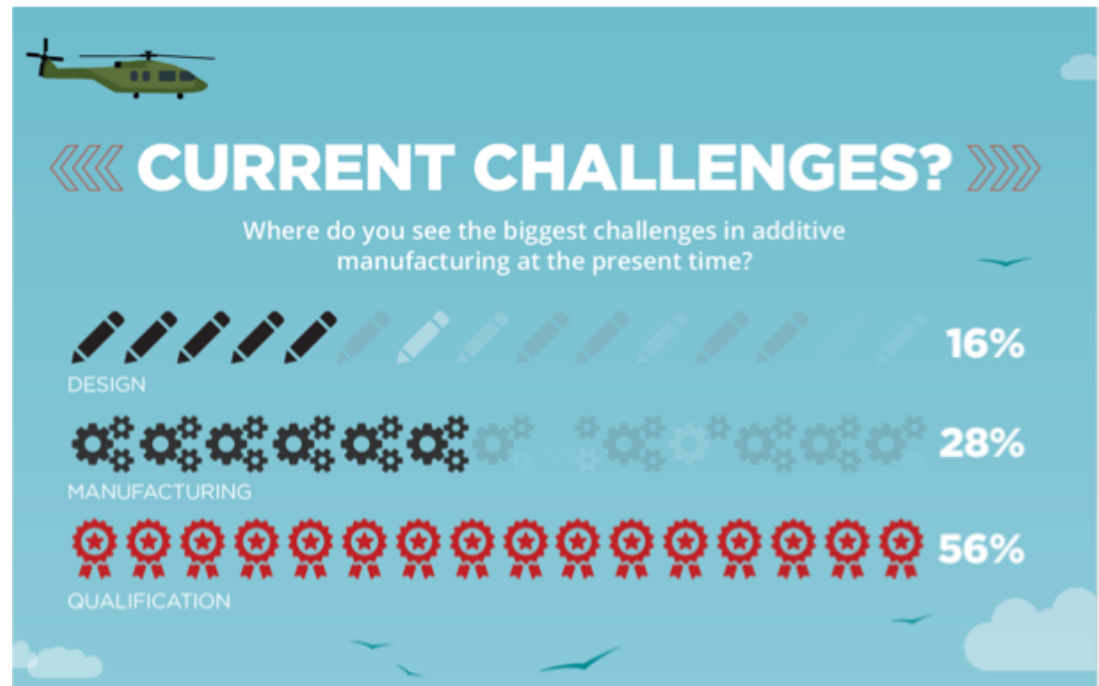
LLNL-PRES-732258

This work was performed under the auspices of the U.S. Department of Energy by Lawrence Livermore National Laboratory under contract DE-AC52-07NA27344. Lawrence Livermore National Security, LLC



Today, there are still barriers to adoption of metal additive manufacturing technology

- 56% of manufacturers surveyed indicated that **uncertain quality** of the final product is a barrier to adoption of AM
- FAA very concerned about process variability and defects that cause fatigue failures
- Success requires an experience base
- Limited science base

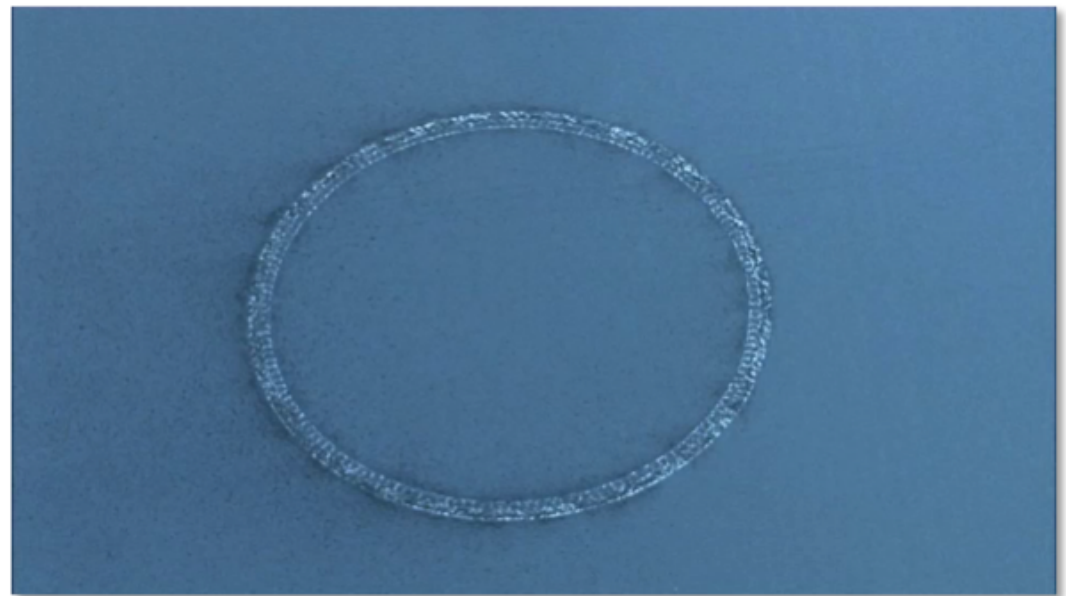


<http://bit.ly/2hMibdi>

The challenge is to replace the experience-based approach with a science-based, automated approach that can be implemented in real manufacturing environments

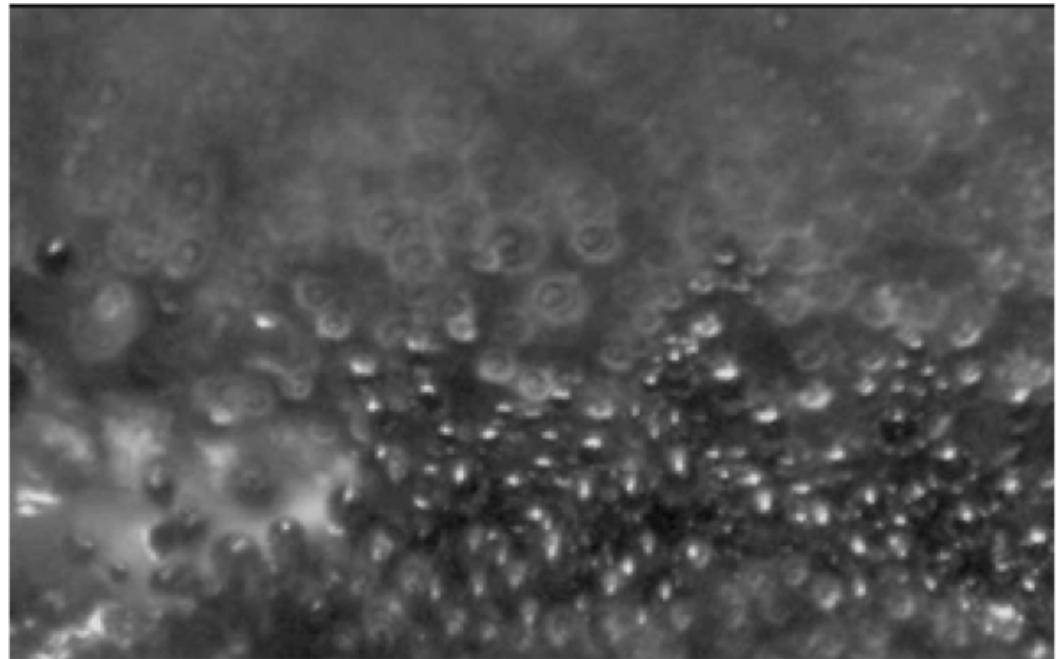
Why is qualification such a challenge for laser-based metal powder-bed fusion additive manufactured parts?

- The physics of the process is quite complex
- Process optimization is costly and time consuming (only have partial control)
- Material and part quality changes if there is a change in:
 - Geometry
 - Orientation
 - Feedstock material
- But, despite these issues, AM offers exquisite control of the process
- **The challenge is to harness this control to produce qualified parts**



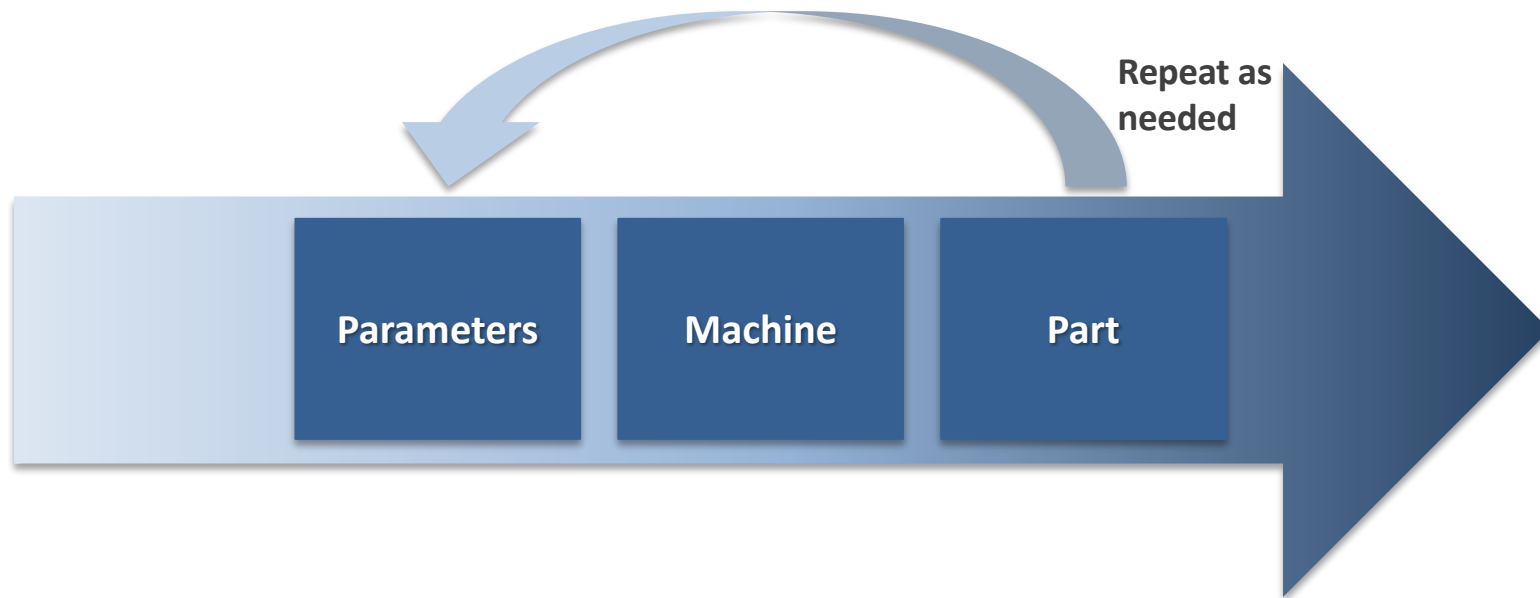
Why is qualification such a challenge for laser-based metal powder-bed fusion additive manufactured parts?

- The physics of the process is quite complex
- Process optimization is costly and time consuming (only have partial control)
- Material and part quality changes if there is a change in:
 - Geometry
 - Orientation
 - Feedstock materials
- But, despite these issues, AM offers exquisite control of the process
- **The challenge is to harness this control to produce qualified parts**



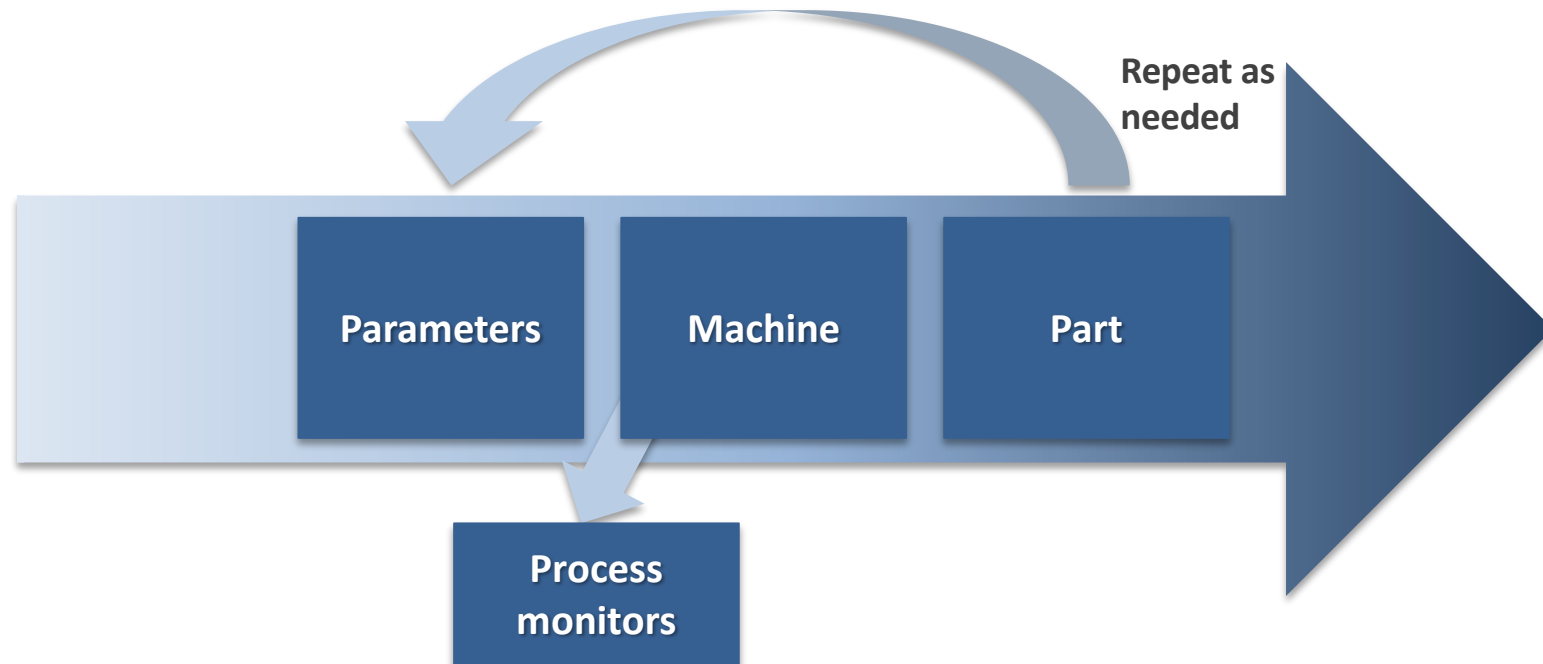
S. Ly et al. 2017, Nature Communications (in press)

Currently, there is no closed-loop control, only Edisonian iteration



After many iterations, an acceptable part can be made

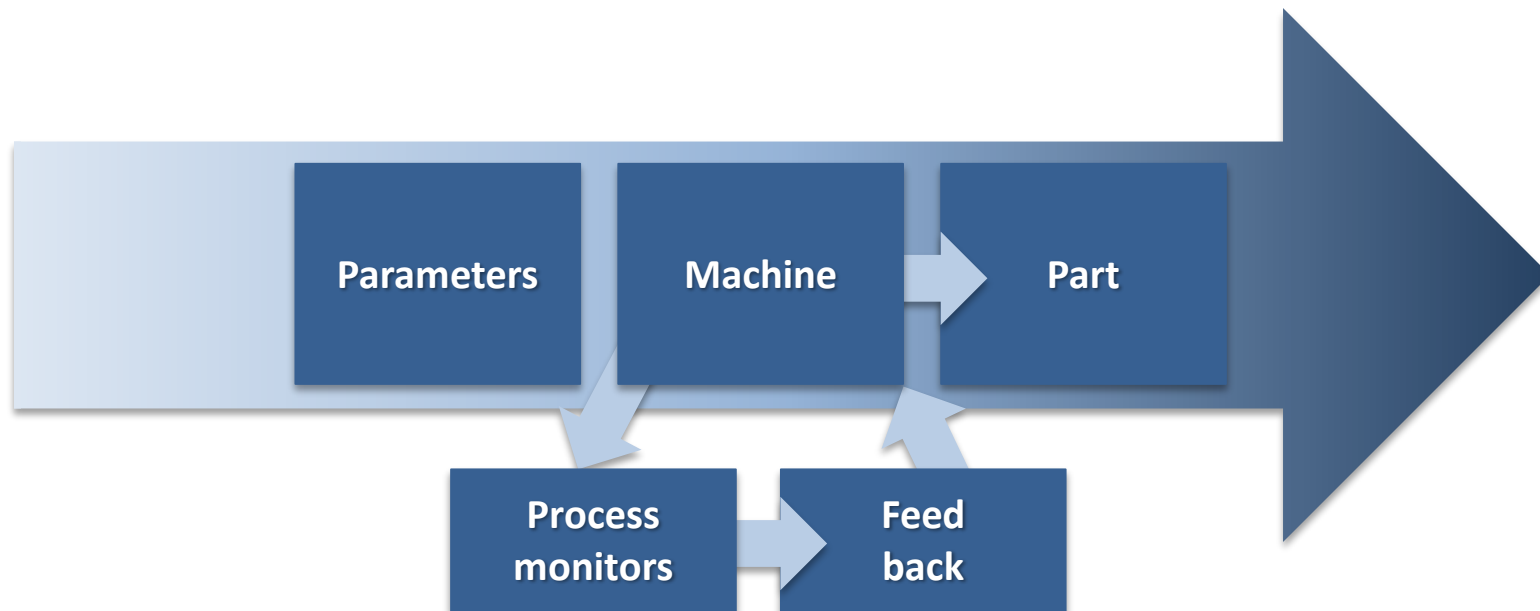
The approach being taken by some is to incorporate process monitoring, but is still open loop



Fewer iterations, but still inefficient

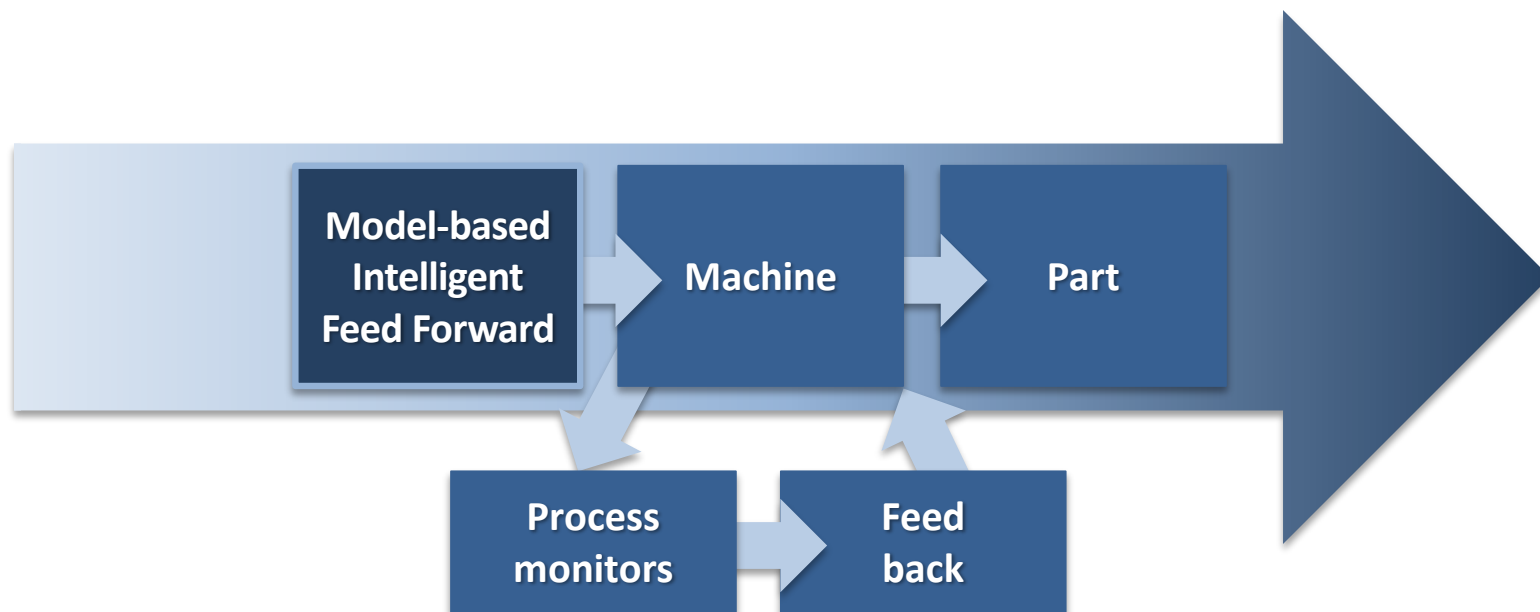


Feedback control is the next step



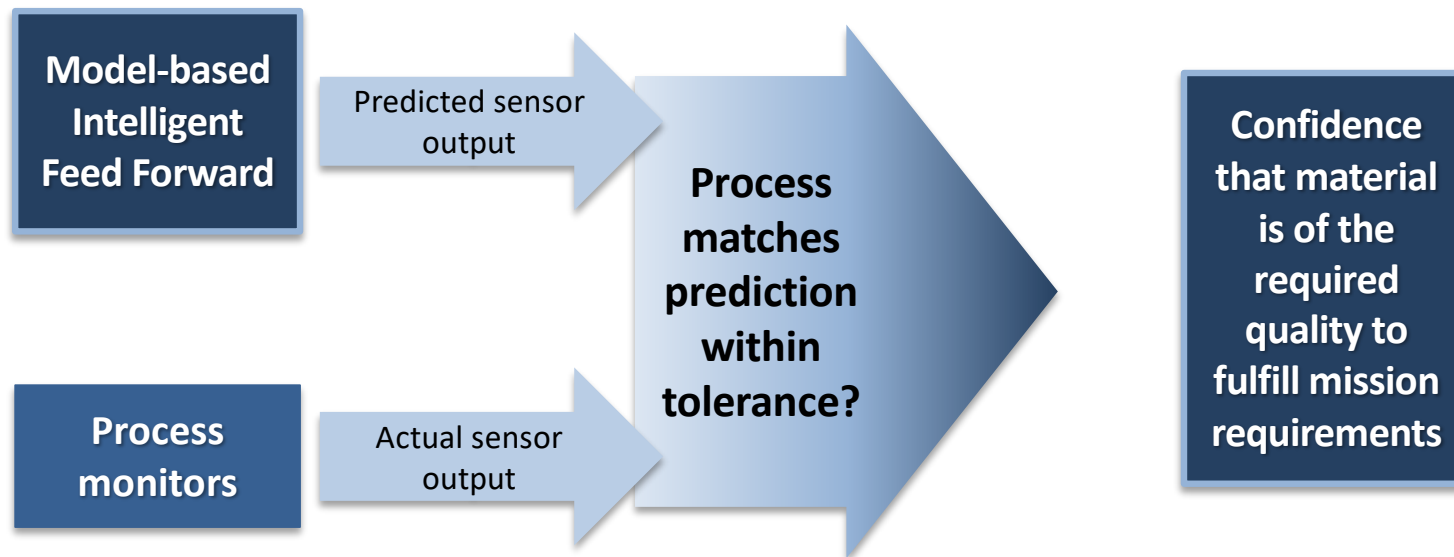
Works when parameters are close to optimal

Vision—Closing the loop with Intelligent Feed Forward (IFF)



IFF puts a narrow band on parameters and approaches “First time right, every time right”

IFF can provide a basis for qualifying parts



Feed-forward adaptive process control has the greatest potential for removing the dreaded variability associated with AM

IFF provides access to two additional classes of defect mitigation strategies

Common geometries and scanning

- Core
- Contour
- Up skin
- Down skin
- Top surface
- Hatch
- Scanning strategy
- Laser parameters

Pre-programmed

Today

Scan

- Keyhole
- End or track
- Lack of fusion
- Fractional island scans
- Other scan strategy induced issues

Power and speed mapping

With IFF

Part-specific geometry

- Thin walls
- Arbitrary inclined downward surfaces
- Unsupported overhangs
- Internal channels
- Residual stress
- Lattices

Voxel-by-voxel control



IFF provides access to two additional classes of defect mitigation strategies

Common geometries and scanning

- Core
- Contour
- Up skin
- Down skin
- Top surface
- Hatch
- Scanning strategy
- Laser parameters

Pre-programmed

Scan

- **Keyhole**
- End or track
- Lack of fusion
- Fractional island scans
- Other scan strategy induced issues

Power and speed mapping

Part specific geometry

- Thin walls
- Arbitrary inclined downward surfaces
- **Unsupported overhangs**
- Internal channels
- Residual stress
- Lattices

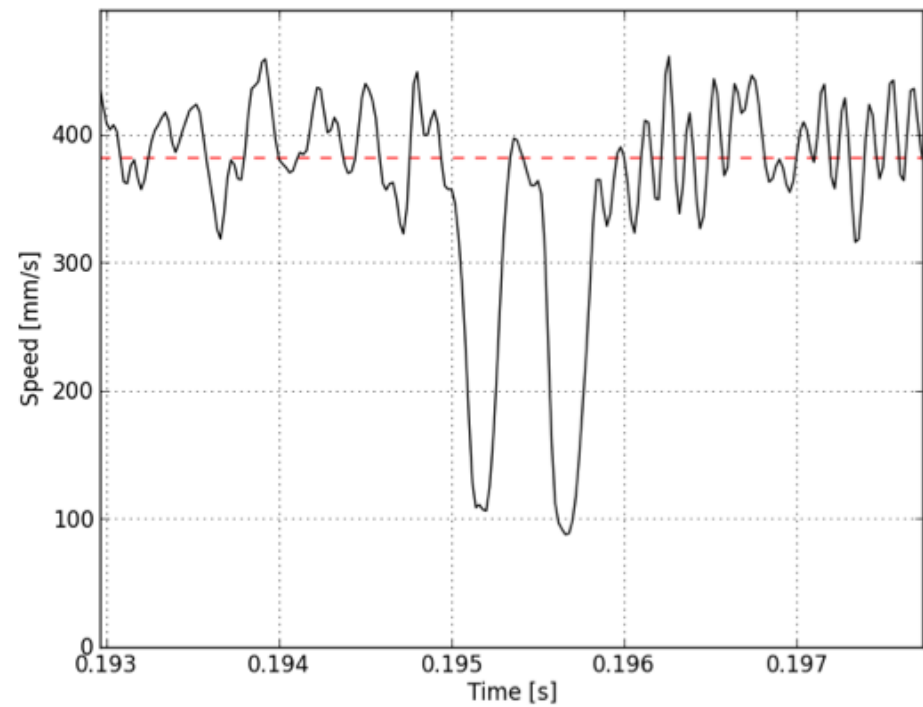
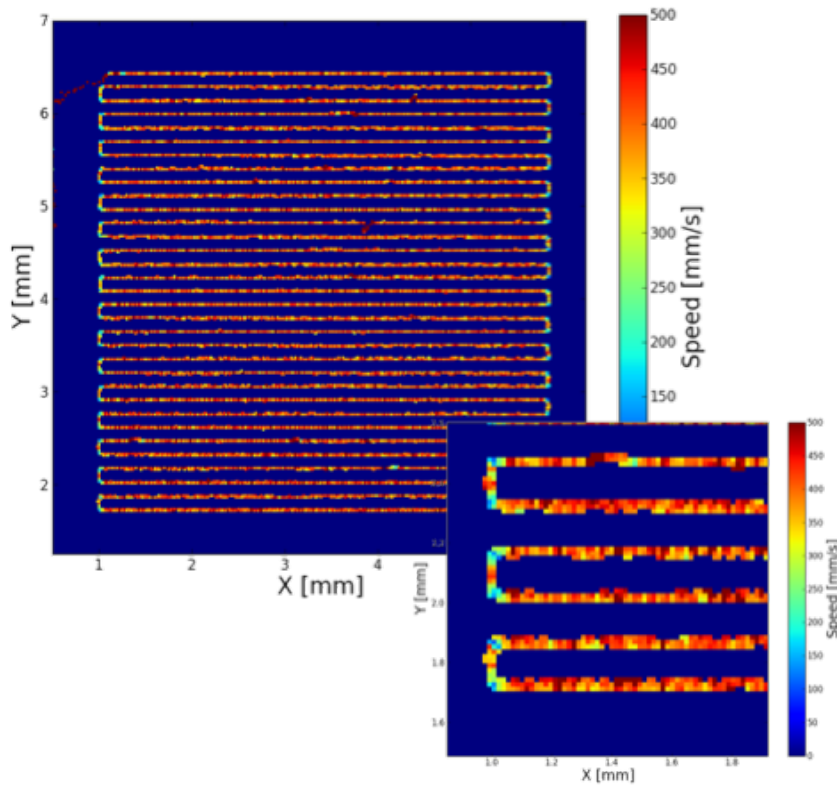
Voxel-by-voxel control

Today

With IFF

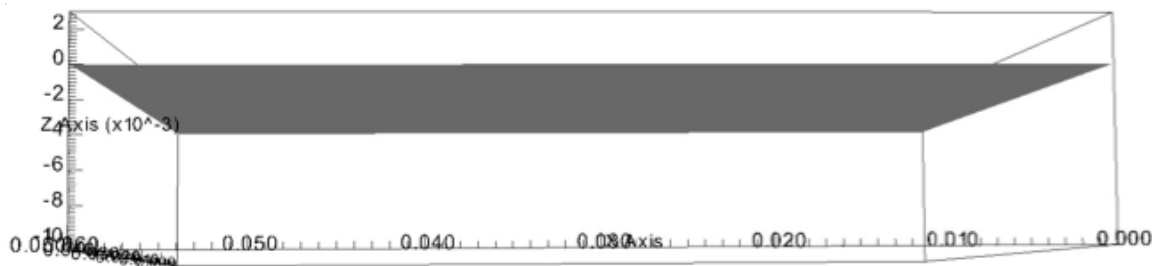


The serpentine island scanning strategy almost ensures the presence of keyhole defects at each turn around

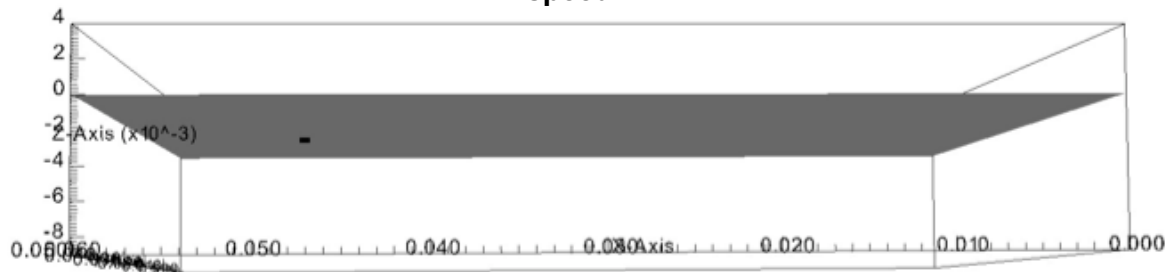


ALE3D has prescribed a power map that mitigates corner turning defects

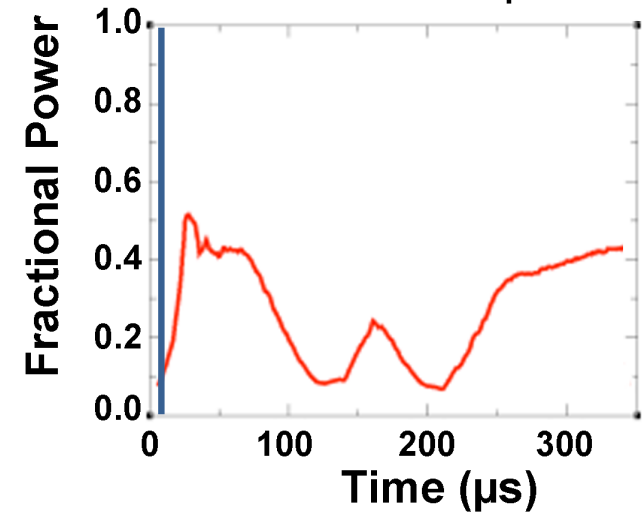
Pore forming at turn-around at constant power & speed



ALE3D optimizes laser power to achieve user pre-assigned depth & scan speed



IFF Power map



ALE3D informed intelligent feed forward tightens control over build process quality

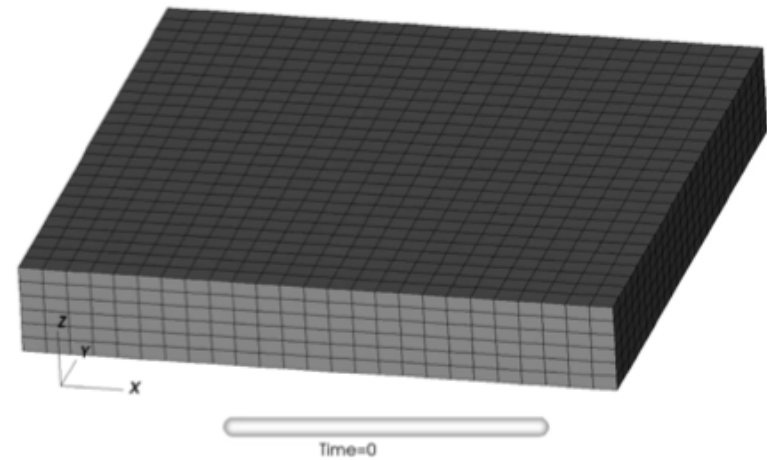
Diablo simulations predict over melting in the overhang region

High laser power:
Full density / dross

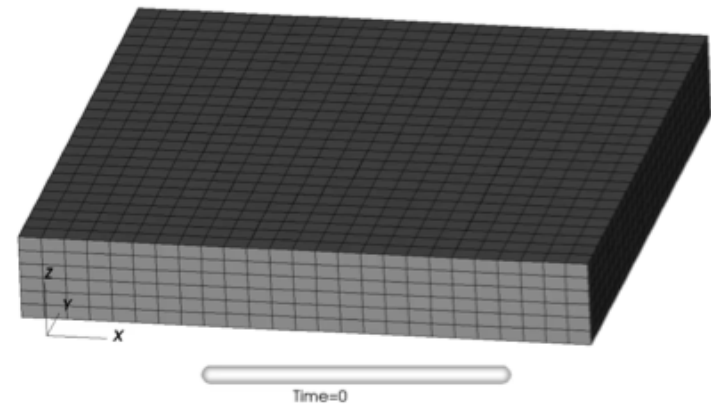
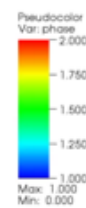
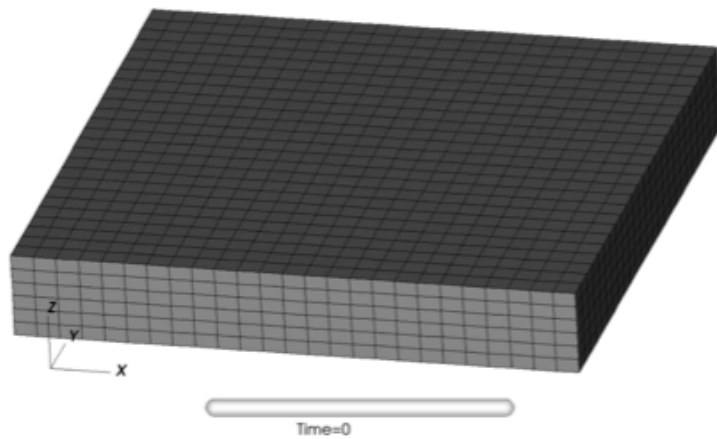
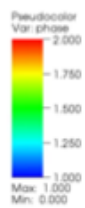


Experimental observation of “dross”
formation in overhang regions

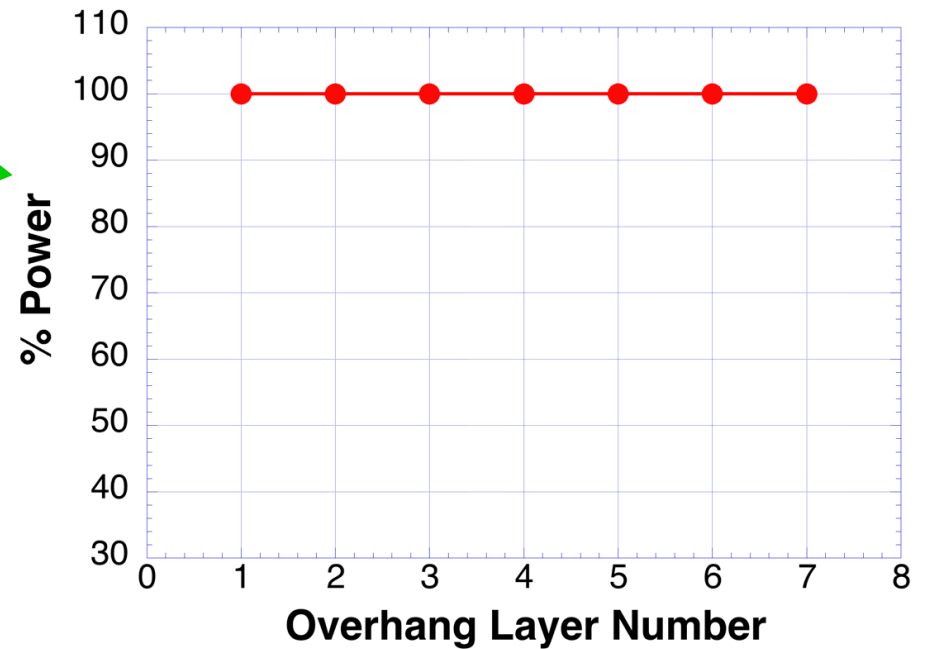
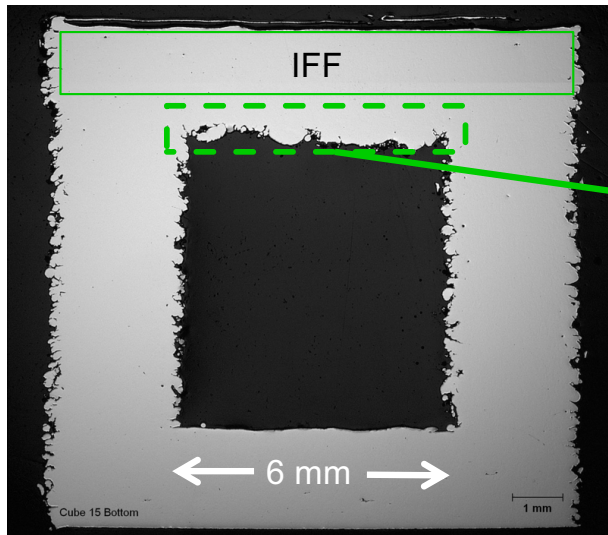
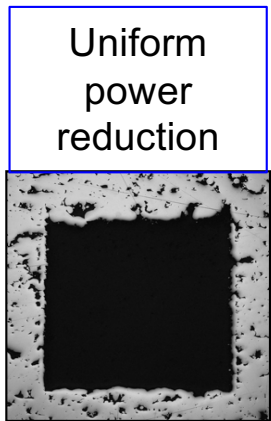
Pseudocolor
Var: phase
2.000
1.750
1.500
1.250
1.000
Max: 1.000
Min: 0.000



By changing the laser power in our Diablo code, we can mitigate the excessive melting in the overhang



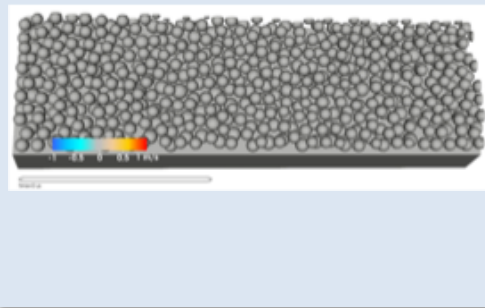
IFF has been successfully demonstrated at LLNL to address the overhang defect problem



This demonstrates the potential for IFF

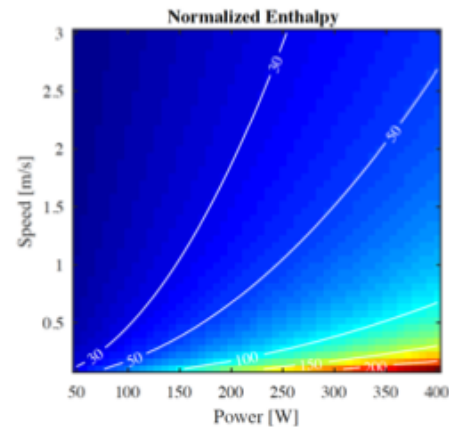
The challenge: LPBF is a multi length scale and multi time scale problem

Physics-based models



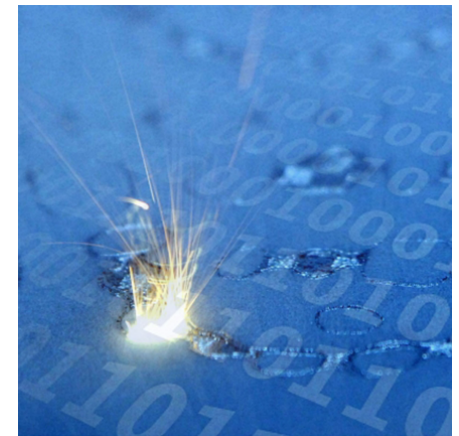
IFF v1.0

Ultrafast surrogates



IFF v2.0

AI and machine learning

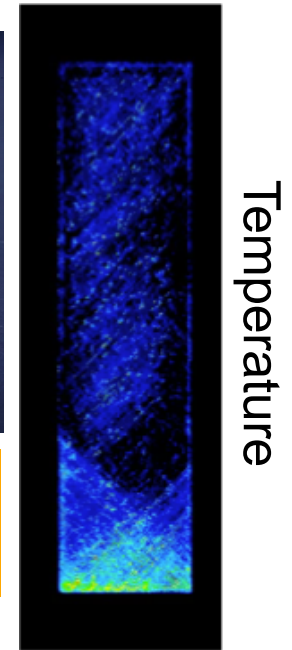
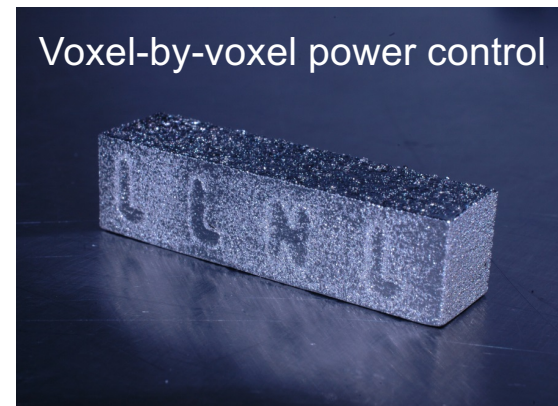


IFF v3.0

Development of ultrafast surrogates will be the key to wide application of IFF

The intelligent feed-forward approach, when successfully developed, will enable “right every time” production

- The approach is meant to be agnostic to feedstock material, machine, and geometry
- It will replace the current experience base with a science base
- Will help establish a "digital thread" to accommodate the large amounts of data (including in situ sensor data) that come with the AM process
- The challenge is to develop the ultrafast surrogate models for the process that follow all of the laser scan paths through all the layers for the entire part



In ten years' time, we believe that every metal additive manufacturing machine will have intelligent feed forward capability, enabling “just press print” for metal additive manufacturing

acammm.llnl.gov